

FAN CONFIGURATION:

Nº of fans: 1
Motor type: EC (Electronically Commuted)
Max. energy consumption: 0,087kW
Power requirements: 230V/50-60Hz
Max. input current: 0,76A
Impeller: Diam. 190 mm-Centrifugal backward curved

FILTER CONFIGURATION:

Pre-filter: Coarse 60% (ISO 16890) / G4 (EN779)
Gas & odor filter: GRSystem 2
Absolute filter: ULPA U15 (EN1822) with virucidal nanofibres

- All frame filters in galvanized steel
- Absolute filter with individual number and test report

GENERAL SPECIFICATIONS:

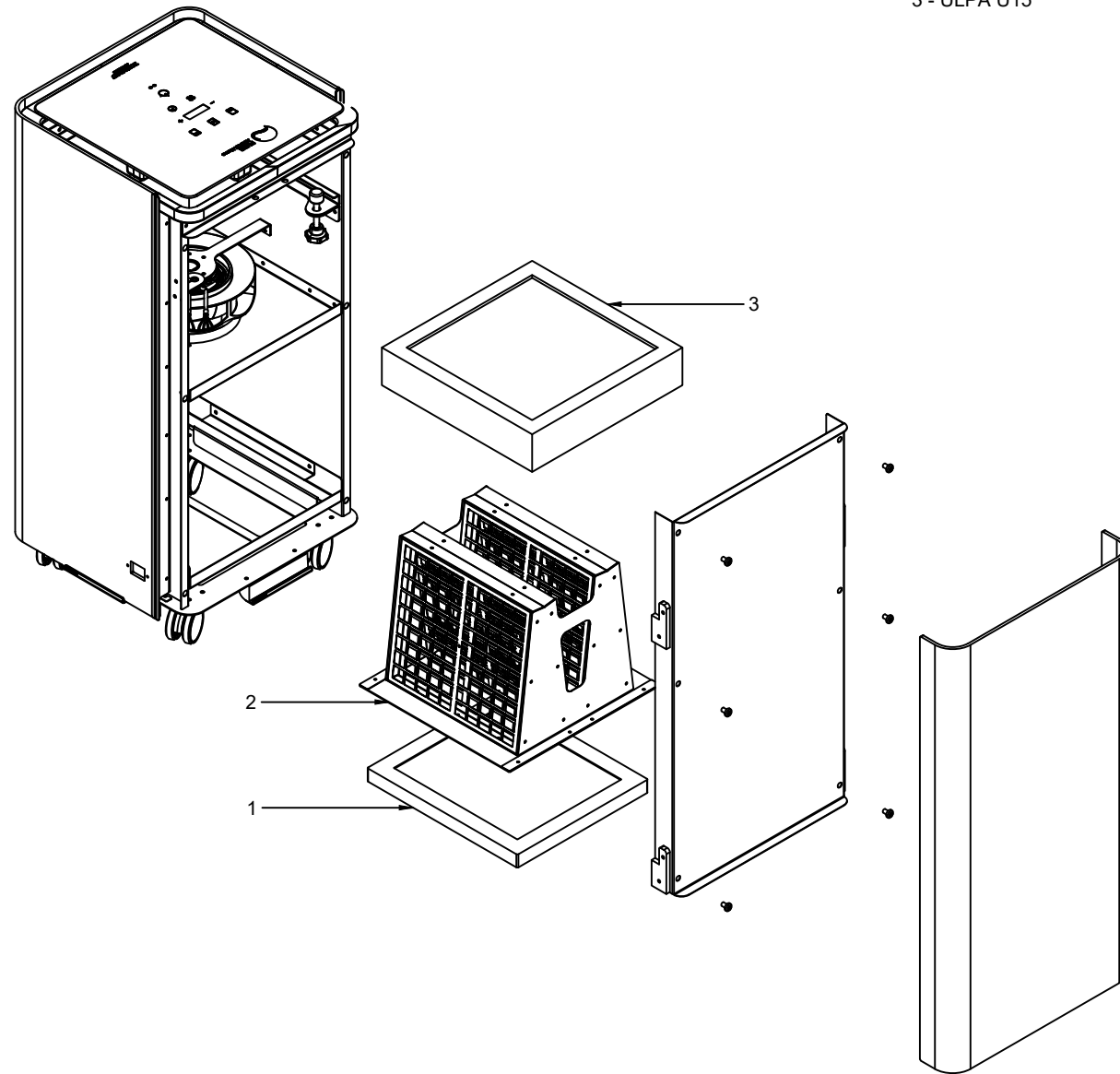
- Dimensions: H791 x W 382 x D 380 mm
- Box dimensions: H 890 x W 465 x D 465 mm
- Net weight: 30Kg / Gross weight: 32Kg
- Housing material: ABS and glass

FEATURES:

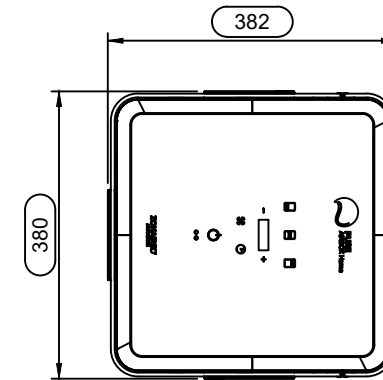
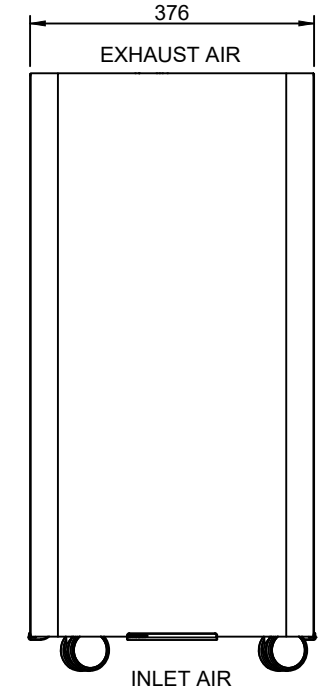
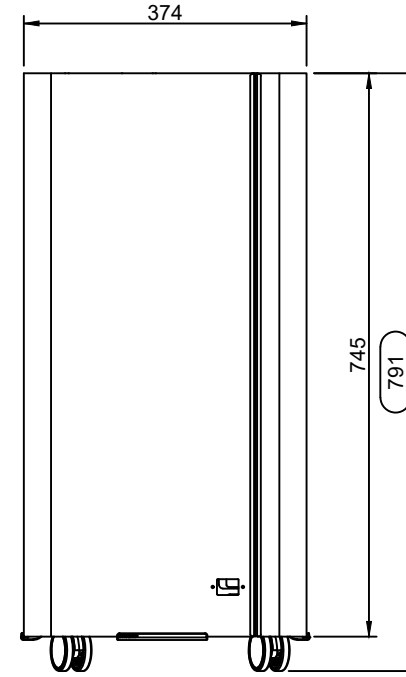
- Plug & Play
- Touch screen: ON/OFF, speed, timer
- Electrical power cord IEC C14

PERFORMANCE:

- Air delivery certified (tested with all filters installed)
- Leak tested (individually tested with all filters installed)



- 1 - Coarse 60%
- 2 - GRSystem 2
- 3 - ULPA U15



FAN SPEED LEVEL	1	2	3	4	5	6	7	8	9	10
Air Flow (m3/h)	45	70	95	130	165	210	240	280	310	332
Lp (3m) (dB(A))	16.7	22.2	28.6	32.6	35.7	38.4	41.6	43.6	45.4	46

NOTES:

1- The filter maintenance is performed through the rear panel.

Date: 19/05/2022

Drawing for: LE

Checked: SL

Din-A3
Escala: 1:10

Model: AIR+ 300S

Version: V.05

Product code: VTPBHS3000001

