

FAN CONFIGURATION:

Nº of fans: 1
 Motor type: EC (Electronically Commuted)
 Max. energy consumption: 0,169kW
 Power requirements: 230V/50-60Hz
 Max. input current: 1,35A
 Impeller: Diam. 190 mm-Centrifugal backward curved

FILTER CONFIGURATION:

Pre-filter: Coarse 60% (ISO 16890) / G4 (EN779)
 Gas & odor filter: GRSYSTEM 2
 Absolute filter: ULPA U15 (EN1822) with virucidal nanofibres

- All frame filters in galvanized steel
 - Absolute filter with individual number and test report

GENERAL SPECIFICATIONS:

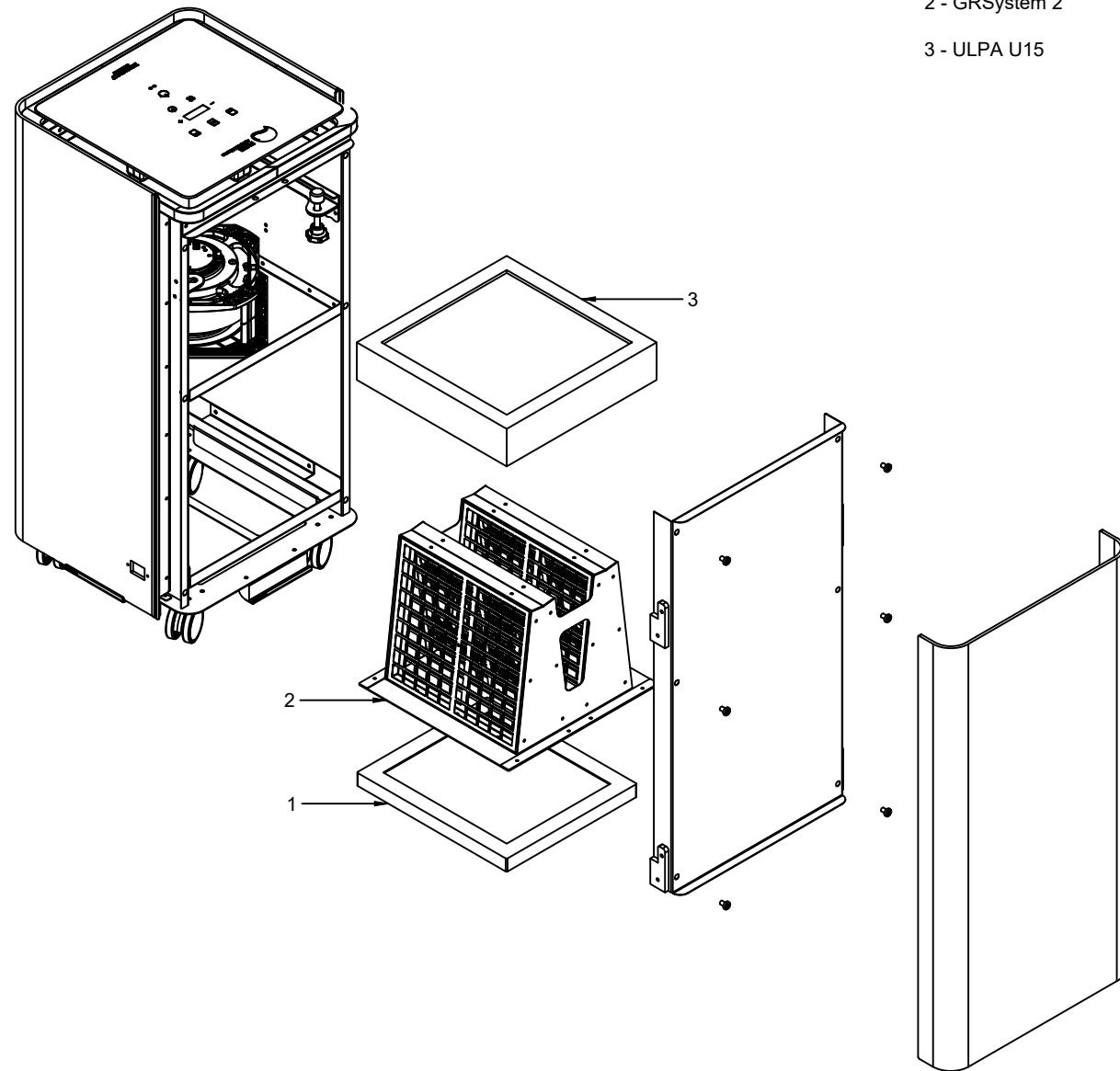
- Dimensions: H791 x W 382 x D 380 mm
 - Box dimensions: H 890 x W 465 x D 465 mm
 - Net weight: 30Kg / Gross weight: 32Kg
 - Housing material: ABS and glass

FEATURES:

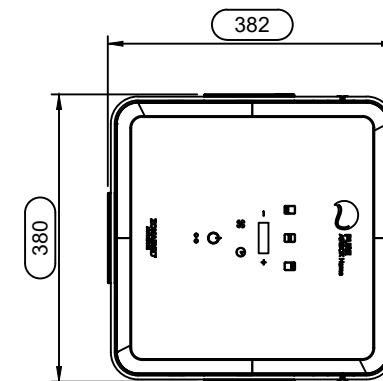
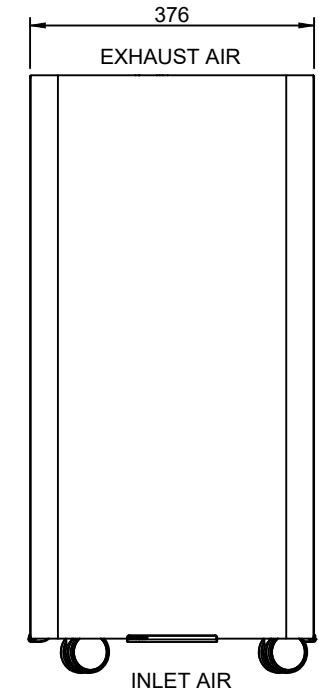
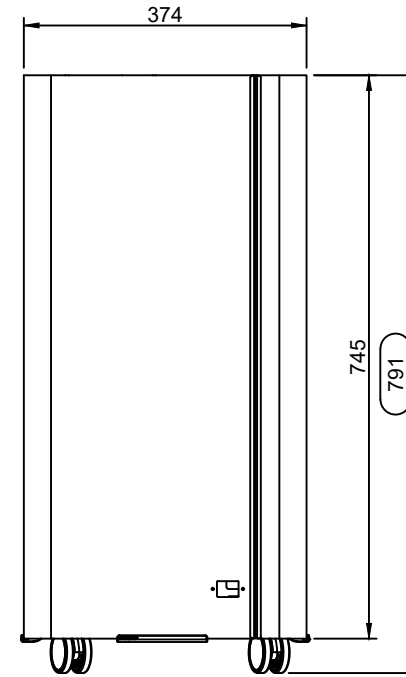
- Plug & Play
 - Touch screen: ON/OFF, speed, timer
 - Electrical power cord IEC C14

PERFORMANCE:

- Air delivery certified (tested with all filters installed)
 - Leak tested (individually tested with all filters installed)



- 1 - Coarse 60%
- 2 - GRSYSTEM 2
- 3 - ULPA U15



Nivel	1	2	3	4	5	6	7	8	9	10
Air Flow (m3/h)	30	58	78	120	195	240	285	350	390	430
Lp (3m) dB(A)	23,7	31,8	36,7	39,6	43,0	45,6	47,8	50,2	51,5	51,6

NOTES:

1- The filter maintenance is performed through the rear panel.

Date: 16/02/2022

Drawing for: LE

Checked: SL

Din-A3
 Escala: 1:10

Model: AIR+ 430S

Version: V.03

Product code: VTPBHS5000001

