

FAN CONFIGURATION:

Nº of fans: 1
 Motor type: EC (Electronically Commuted)
 Max. energy consumption: 0,083kW
 Power requirements: 230V/50-60Hz
 Max. input current: 0,75A
 Impeller: Diam. 190 mm-Centrifugal backward curved

FILTER CONFIGURATION:

Pre-filter: Coarse 60% (ISO 16890) / G4 (EN779)
 Gas & odor filter: GRSytem 2
 Absolute filter: ULPA U15 (EN1822) with virucidal nanofibres

- All frame filters in galvanized steel
 - Absolute filter with individual number and test report

GENERAL SPECIFICATIONS:

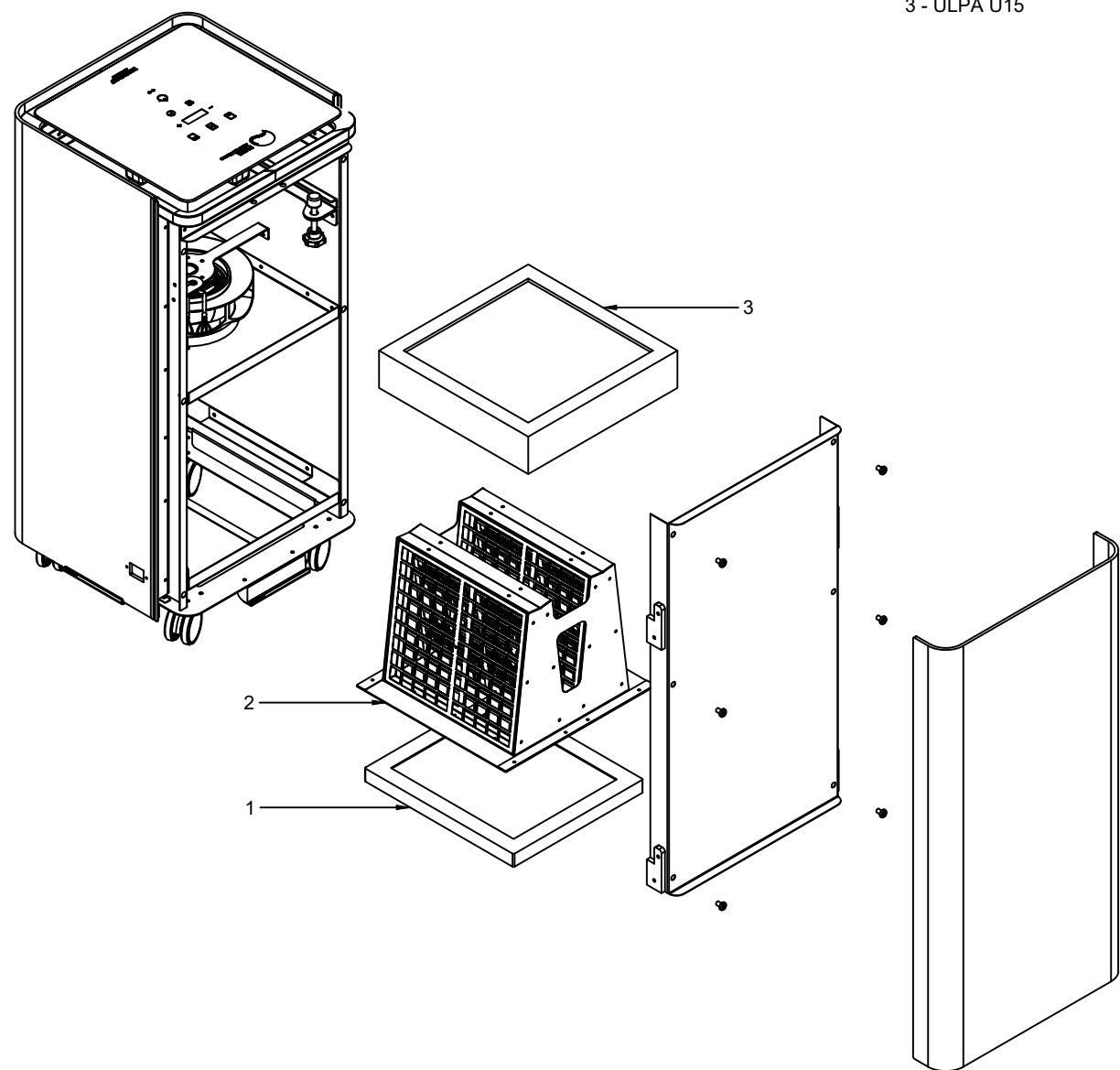
- Dimensions: H791 x W 382 x D 380 mm
 - Box dimensions: H 890 x W 465 x D 465 mm
 - Net weight: 30Kg / Gross weight: 32Kg
 - Housing material: ABS and glass

FEATURES:

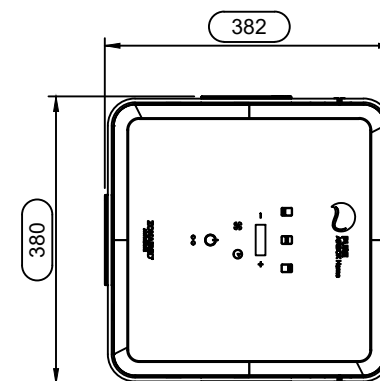
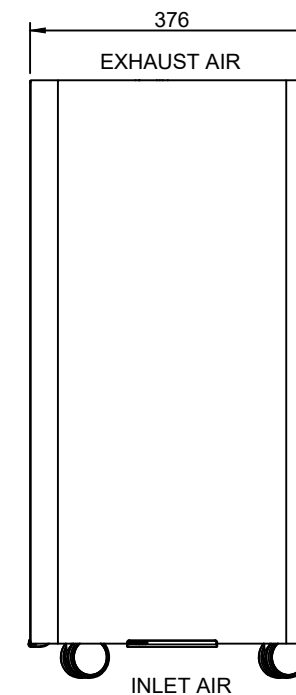
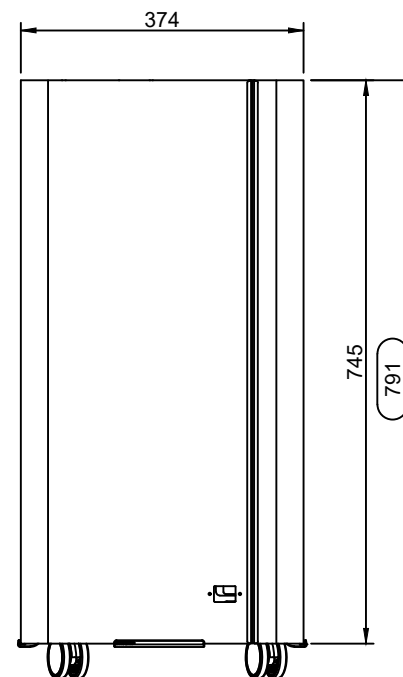
- Plug & Play
 - Touch screen: ON/OFF, speed, timer
 - Electrical power cord IEC C14

PERFORMANCE:

- Air delivery certified (tested with all filters installed)
 - Leak tested (individually tested with all filters installed)



- 1 - Coarse 60%
- 2 - GRSytem 2
- 3 - ULPA U15



Nivel	1	2	3	4	5	6	7	8	9	10
Air Flow (m3/h)	25	48	67	96	123	158	192	239	282	332
Lp (3m) dB(A)	16,7	22,2	28,6	32,6	35,7	38,4	41,6	43,6	45,4	46,0

NOTES:

1- The filter maintenance is performed through the rear panel.

Date: 16/02/2022

Drawing for: LE

Checked: SL

Din-A3
 Escala: 1:10

Model: AIR+ 300S

Version: V.03

Product code: VTPBHS3000001

